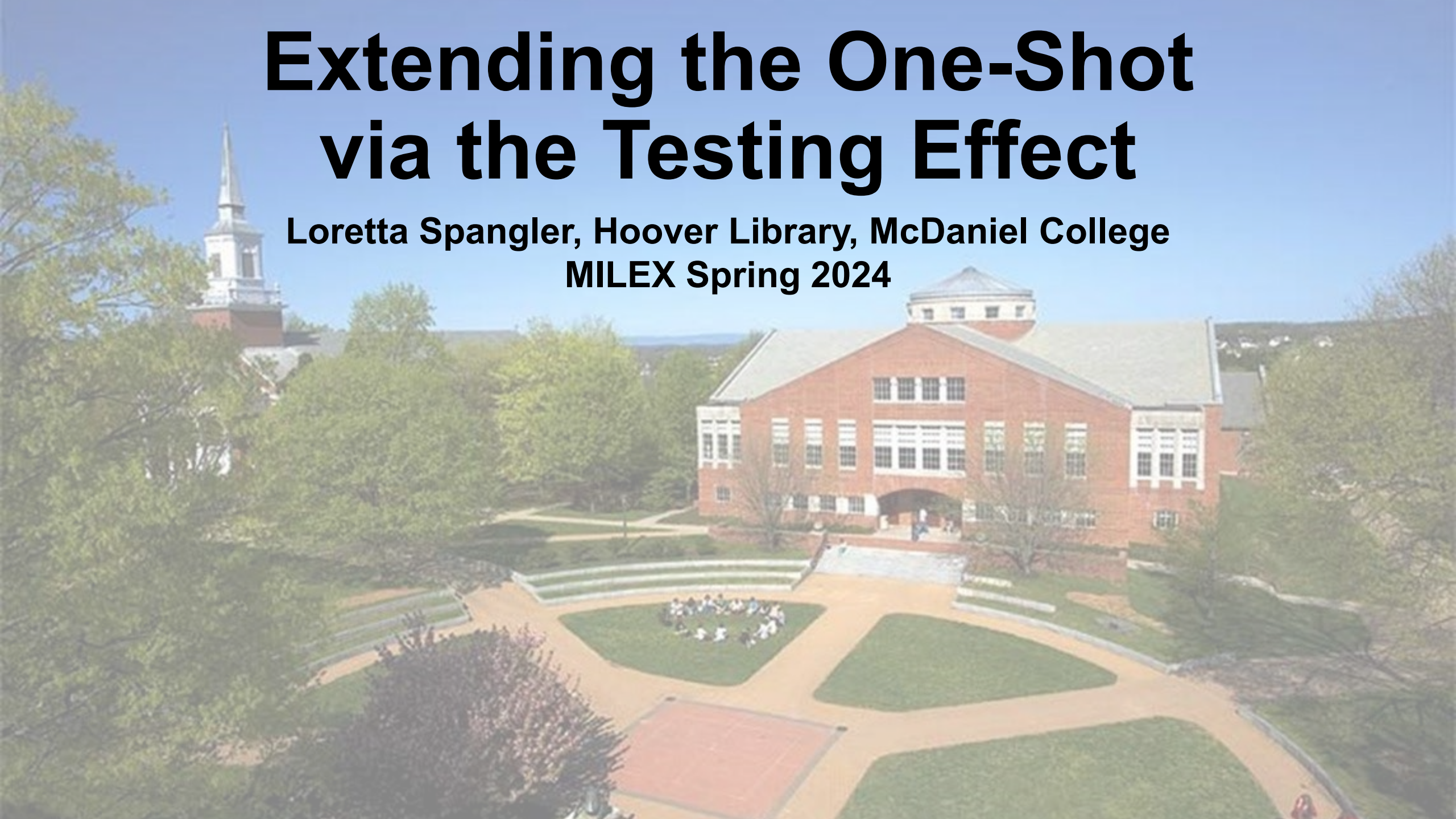


# **Extending the One-Shot via the Testing Effect**

**Loretta Spangler, Hoover Library, McDaniel College  
MILEX Spring 2024**



A hand holding a pencil is positioned over a calculator. The calculator has a green label that reads "DO NOT WRITE IN THIS AREA". The background is a soft, out-of-focus light green and white.

# Today's Agenda

- Background
- The testing effect
- Application

# The testing effect

“the finding that taking a test on previously studied material leads to better retention than does restudying that material for an equivalent amount of time”\*

# Retrieval practice: What

- The act of recalling information from memory

# Retrieval practice: How

- Motivates focus
- Creates and strengthens neural connections



# Retrieval practice: Why

- Provides a positive learning benefit under a wide range of formats and timing conditions
- Improves student learning more than other study tactics
- Effective even with low or no intrinsic motivation

# Application

- Decide what content you want students to remember
- Create questions to help students recall that content
- Deploy after the library session
- Provide feedback after each question, when possible
- Use LMS question analysis tools to investigate effectiveness of questions

# Example: Content

- General intro to library, importance to college success, how to reach out for help
- Scholarly and popular sources
- Use of books in research - why, and how to locate in catalog and on shelves



# Example: Question

Which of the following is NOT a characteristic of a scholarly source?

- A. Authored by an expert or researcher
- B. Published by an academic press or in a scholarly peer-reviewed journal
- C. Written to share original research or insights with other experts
- D. Widely available on the open internet
- E. Always includes a list of references

# Example: Question

Which of the following is NOT a characteristic of a scholarly source?

- A. Authored by an expert or researcher
- B. Published by an academic press or in a scholarly peer-reviewed journal
- C. Written to share original research or insights with other experts
- D. Widely available on the open internet**
- E. Always includes a list of references

# Practice: Improve this question

Should popular sources be used for a college research assignment?

- A. Yes
- B. No
- C. Maybe so (It could lead to other types of credible sources!)
- D. I have no idea

# Practice: Improve this question

Which of the following is true about the kind of sources you should use for your college research assignments?

- A. Most college research assignments require use of scholarly sources.
- B. Credible popular sources, i.e., sources aimed at general audiences, may sometimes be used, depending on the context.
- C. Always read assignment directions carefully and thoroughly, and proceed accordingly.
- D. All of the above**

# Practice: Improve this question

Name one reason a researcher might choose to use a book.

**Note to workshop attendees:** This was originally a short answer question, where any one of the following was an acceptable answer. Try converting it to a multiple-choice question.

- In-depth coverage of a subject
- History and chronology
- Overview of a big topic
- Background information
- Reference lists of additional sources

# Practice: Improve this question

Which of the following is true about using books for college research assignments?

- A. Books are not considered to be scholarly sources.
- B. A book can provide an overview of your topic (including background information, history, and chronology) and point you to other sources.**
- C. Before using a book in your research, you must first read it cover to cover.
- D. E-books don't count as "real" books.



# References

- Agarwal, P. K., Nunes, L. D., & Blunt, J. R. (2021). Retrieval practice consistently benefits student learning: A systematic review of applied research in schools and classrooms. *Educational Psychology Review*. [doi.org/10.1007/s10648-021-09595-9](https://doi.org/10.1007/s10648-021-09595-9)
- American Psychological Association. (2018, April 19). Testing effect. In *APA Dictionary of Psychology*. Retrieved April 10, 2024, from <https://dictionary.apa.org/testing-effect>
- Endres, T. & Renkl, A. (2015). Mechanisms behind the testing effect: An empirical investigation of retrieval practice in meaningful learning. *Frontiers in Psychology*, 6. <https://doi.org/10.3389/fpsyg.2015.01054>
- Guran, C.-N. A., Deuker, L., Gottlich, M., Axmacher, N., & Bunzeck, N. (2022). Benefit from retrieval practice is linked to temporal and frontal activity in healthy young and older humans. *Cerebral Cortex Communications*, 3(1). <https://doi.org/10.1093/texcom/tgac009>
- Marsh, E. J. & Cantor, A. D. (2014). Learning from the test: Dos and don'ts for using multiple-choice tests. In McDaniel, M.A., Frey, R.F., Fitzpatrick, S.M., and Roediger, H.L., III (Eds.), *Integrating Cognitive Science with Innovative Teaching in STEM Disciplines* (pp. 38-53). Washington University Libraries. doi: <http://dx.doi.org/10.7936/K75Q4T1X>
- Schmidt, R. A. & Bjork, R. A. (1992). New conceptualizations of practice: Common principles in three paradigms suggest new concepts for training. *Psychological Science*, 3(4), 207–217.
- Szpunar, K. K., Khan, N. Y., & Schacter, D. L. (2013). Interpolated memory tests reduce mind wandering and improve learning of online lectures. *Proceedings of the National Academy of Sciences of the United States of America*, 110(16), 6313–6317.
- Wiklund-Hörnqvist, C., Stillesjö, S., Andersson, M., Jonsson, B., & Nyberg, L. (2022). Retrieval practice is effective regardless of self-reported need for cognition: Behavioral and brain imaging evidence. *Frontiers in Psychology*, 12. <https://doi.org/10.3389/fpsyg.2021.797395>