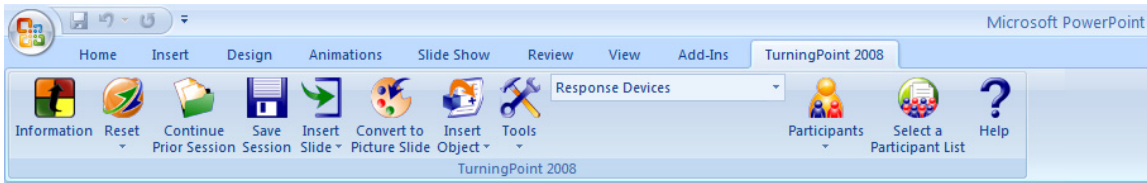


Tour of the TurningPoint Toolbar

When you launch TurningPoint, PowerPoint opens and the TurningPoint toolbar is displayed beneath the PowerPoint standard and formatting toolbars in the upper region of the window, as the following image depicts.

TurningPoint Toolbar



The following descriptions define the buttons that make up the tools in the TurningPoint toolbar.

Information



Allows you to view information about your TurningPoint License. It also provides a mechanism to supply Feedback to TurningTechnologies.

Reset



Resets the response tallies from the audience to zero for all slides in the session or only the current slide.

Continue Prior Session



Opens a previously saved session. A session is a run-through of a presentation where an audience has submitted responses to some or all of the questions.

Save Session



Stores the current session for retrieval later.

Insert Slide



Displays a menu of TurningPoint slides that you select to create a presentation.

Convert to Picture Slide



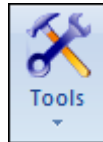
Use to assign and order pictures as answers instead of text.

Insert Object



Displays a menu of items that you select to enhance a slide.

Tools



Provides advanced options to set up, create a presentation, and report data.

Select Input Source



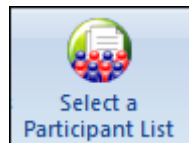
Selects the type of response devices to be used with the presentation.

Participant



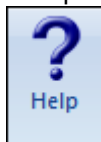
Provides options to be used with Participant Lists.

Select a Participant List



Assigns a Participant List to a session.

Display TurningPoint Help



Opens the online help file.